

Model: RT310 (Digital room thermostat)  
RT310RF (Digital room wireless thermostat)

TPI



Installation Manual

## Button functions

RT310 / RT310TX Thermostat



1. Turn on the LCD backlight
2. HEAT/COOL modes change or Frost Protection mode activation
3. Increase button
4. Decrease button

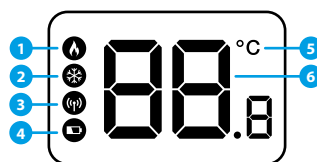
RXRT510 Receiver



5. When in Manual Mode, ON will turn the boiler on
6. When in Manual Mode, OFF will turn the boiler of
7. Receiver operates in automatic mode according to the thermostat
8. Receiver output is controlled by the On/Off slide switch.

Receiver's LED diode	Status	Description
Red	Solid light	Power on
	Flashing	Lost connection or pairing mode
Green	Solid light	System works

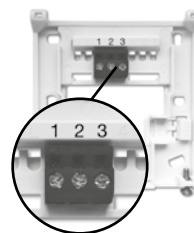
## LCD Icon description



1. Heating Mode ON
2. Cooling Mode ON/ Frost Protection Mode ON
3. RF signal indicator (only in RT310RF)
4. Low battery status
5. Temperature unit
6. Room / setpoint temperature

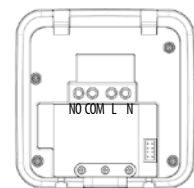
## RT310 Terminals description

Terminal	Description
1 - COM	Common Terminal
2 - NC	Switched Live OFF
3 - NO	Switched Live ON



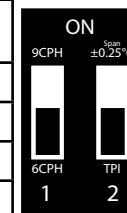
## RXRT510 Receiver terminals description

Terminal	Description
NO	Switch Terminal
COM	Common Switch Terminal
L, N	Supply (230 V AC)

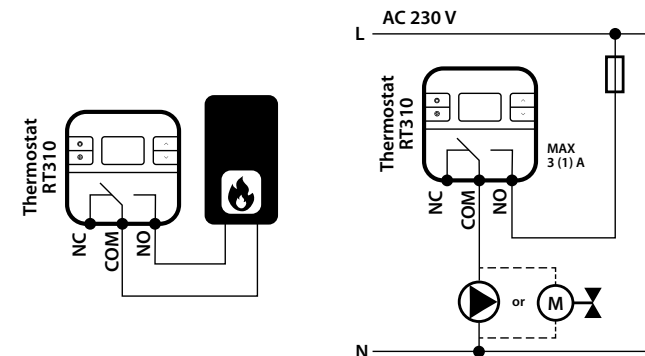


## DIP switches parameters

1	2	Cooling	Heating	Default value
ON	ON	Hysteresis +/- 0.25 °C	Hysteresis +/- 0.25 °C	
ON	ON	Hysteresis +/- 1.5 °C	Hysteresis +/- 0.5 °C	
ON	OFF	Hysteresis +/- 1.0 °C	TPI 9 CPH	
OFF	OFF	Hysteresis +/- 0.5 °C	TPI 6 CPH	✓

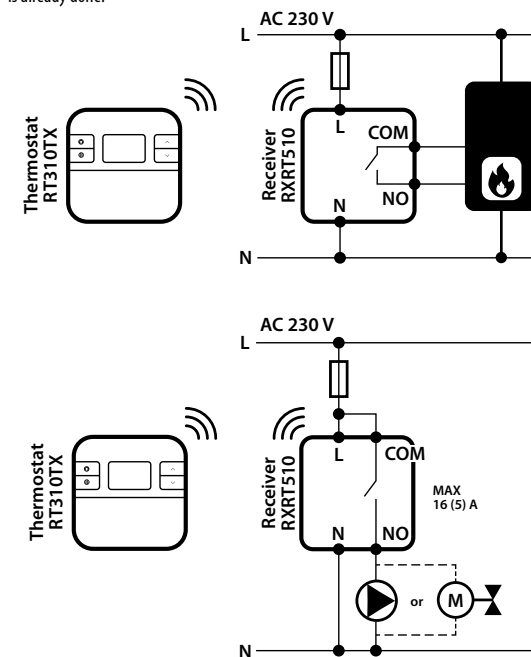


## RT310 Wiring diagram



## RT310RF Wiring diagram

**Note:** If you are using the RT310RF pack, the pairing between the thermostat and the receiver is already done!



## Introduction

RT310 / RT310RF is a digital room thermostat used to control room temperature. Device launching heating or cooling system by shorting terminal blocks, simultaneously informing the action and showing this information on the LCD display. Before use please read this manual carefully. Use only AA 1.5 V alkaline batteries in the thermostat. Place the batteries into the battery slot located under the cover. Do not use rechargeable batteries.

## Product compliance

Directives: EMC 2014/30/EU, LVD 2014/35/EU, RED 2014/53/EU and RoHS 2011/65/EU.  
Full information is available on the website [www.saluslegal.com](http://www.saluslegal.com)



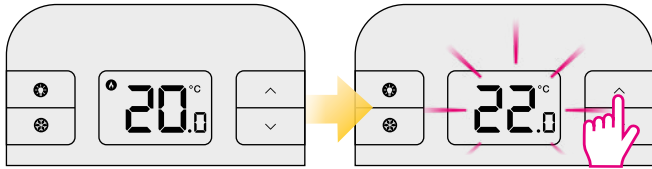
## Safety Information

Use in accordance to national and EU regulations. Use the device as intended, keeping it in dry condition. Product for indoor use only. Installation must be carried out by a qualified person in accordance to national and EU regulations.

## Technical specification

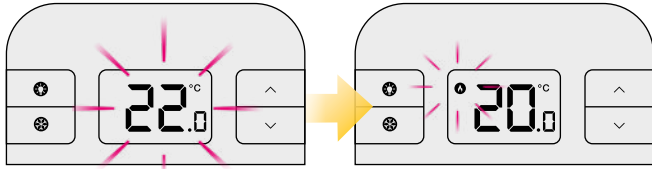
	RT310	RT310RF
Thermostat supply	2 x AA alkaline batteries	2 x AA alkaline batteries
Receiver supply	-	230 V AC
Thermostat rating max	3 (1) A	-
Receiver rating max	-	16 (5) A
Outputs	Voltage free NO / COM / NC terminals	Voltage free NO / COM terminals
Temperature range	5 - 35°C	5 - 35°C

## Change the Setpoint temperature



Actual room temperature.

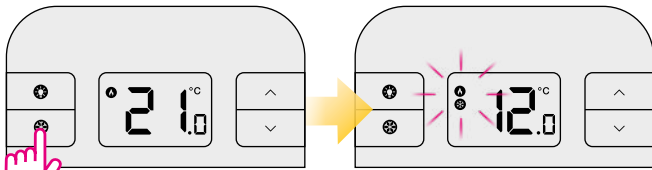
Press  $\wedge$  or  $\vee$ , to set the temperature.



After 2 seconds, the new temperature setpoint will be overwritten.

The thermostat will display the measured temperature again. The heating mode icon will start flashing if the temperature setpoint is higher than the measured temperature.

## Frost Protection



Press  $\text{❄}$  button to turn On/Off frost protection.

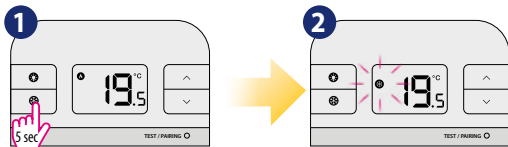
When the snowflake icon is displayed right next to the flame icon (heating mode) it means that the frost protection mode is active.

**i** The Frostpoint temperature can be reviewed by pressing the UP button once,  $\wedge$  but can only be changed in Installer Mode.

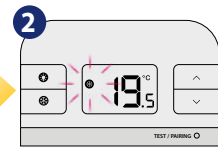
## Heat / Cool mode selection\*

The user can change the heating and cooling mode.

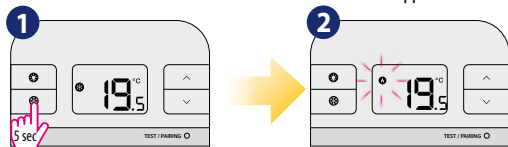
**⚠ NOTE:** In cooling mode, the thermostat reports a cooling demand with a 3-minute delay.



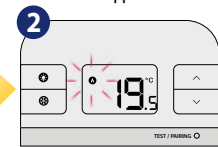
To switch the thermostat to cooling mode, press and hold the snowflake button for 5 seconds.



When the thermostat switches to cooling mode, the snowflake icon will be displayed and the flame icon will disappear.



To switch the thermostat to heating mode, press and hold the snowflake button for 5 seconds.

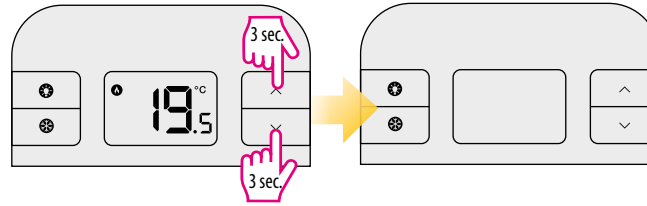


When the thermostat switches to heating mode, the flame icon will be displayed.

\* Function available from software version v2.1.

## Sleep Mode

**i** When Sleep Mode is active all the thermostat functions will be paused.



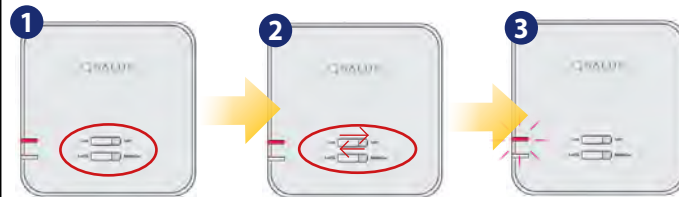
To enter sleep mode, press and hold  $\vee$  and  $\wedge$  for 5 seconds.

To exit sleep mode, press any button.

## Pairing the RT310TX thermostat with the RXRT510 receiver

**⚠ NOTE:** IN THE RT310RF SET, THE THERMOSTAT IS FACTORY PAIRED WITH THE RECEIVER!

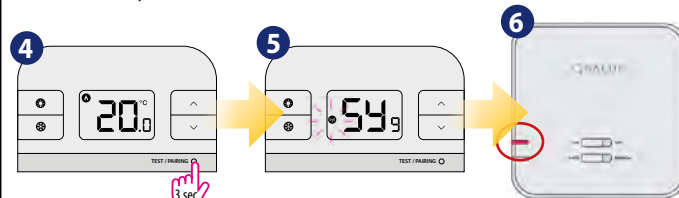
**i** If you want to pair the thermostat with the receiver again, make sure that the device is disconnected from the power supply and the switches on the receiver are in the AUTO and ON positions.



Connect the receiver to the power supply and wait for the red diode to glow continuously.

Then set the switch to the OFF position and quickly move it to the ON position.

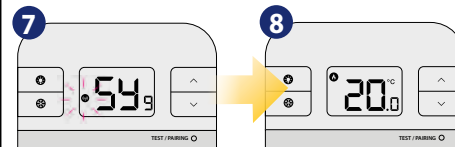
Red flashing LED will confirm entering the pairing mode.



Press and hold the TEST / PAIRING button for 3 seconds.

The pairing process takes up to 9 minutes.

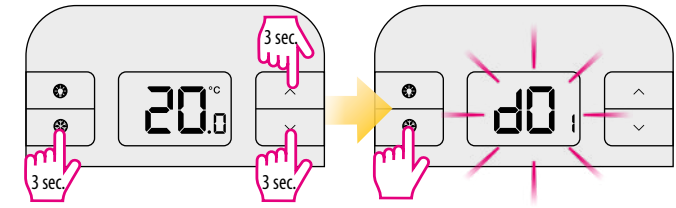
When the red diode on the receiver lights up continuously, the devices have been paired on a new frequency.



To complete the pairing process press and hold the TEST / PAIRING button for 3 seconds.

The thermostat will return to the main screen.

## Installer Mode

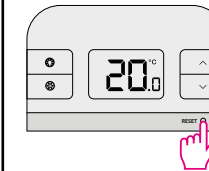


Press three buttons at the same time for 3 seconds.

Press  $\text{❄}$  to change the parameter. To change the parameter value use  $\vee$  and  $\wedge$  buttons.

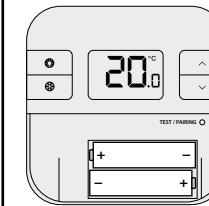
dxx	Function	Parameter value	Default value
d01	Temperature display increments	0.1°C or 0.5°C	0.5°C
d02	Temperature offset	+/- 3.0°C	0.0°C
d03	Frost Protection setpoint temperature	5.0°C - 17.0°C	5.0°C

## Reset of the RT310 thermostat



Press the RESET button (you can use a paper clip), the thermostat will reset and turn on automatically.

## RT310TX thermostat reset



Remove the batteries without pressing any button. Wait 2 minutes and insert the batteries again. Your device will be restarted.

**i** When you want to change the batteries your device will use the internal memory to backup your settings. You have 30 seconds to change the batteries before losing your settings.

IMPORTER:  
QL CONTROLS Sp. z o.o. Sp. k.  
ul. Rolna 4, 43-262 Koblíčky

PRODUCER:  
Salus Limited  
6/F, Building 20E, Phase 3, Hong Kong Science Park, 20 Science Park East Avenue, Shatin, New Territories, Hong Kong



[www.salus-controls.eu](http://www.salus-controls.eu)

SALUS Controls is a member of the Computime Group.

Maintaining a policy of continuous product development SALUS Controls plc reserve the right to change specification, design and materials of products listed in this brochure without prior notice.