

Temperature sensor/thermostat
Model: TS600



III 2021 (ENG)

User manual



PRODUCER:
Salus Limited
6/F, Building 20E, Phase 3, Hong Kong Science
Park, 20 Science Park East Avenue, Shatin,
New Territories, Hong Kong

IMPORTER:
QL CONTROLS Sp. z o.o. Sp. k.
ul. Rolna 4, 43-262 Koblence



www.salus-controls.eu

SALUS Controls is a member of the Computime Group.

Maintaining a policy of continuous product development SALUS Controls plc reserve the right to change specification, design and materials of products listed in this brochure without prior notice.



Introduction

TS600 is a surface-mounted sensor and a thermostat for wireless control of SALUS Smart Home devices. Installation and configuration are carried out using the SALUS Smart Home application, the UGE600 universal gateway is also required for operation. In Online mode it can communicate with devices such as: KL08RF wiring centre, mini TRV radiator head, RX10RF receiver, SR600 smart relay and SPE600 smart plug.



SALUS Smart Home



Product compliance

This product complies with the essential requirements and other relevant provisions of Directives 2014/53/EU and 2011/65/EU. The full text of the EU Declaration of Conformity is available at the following internet address: www.saluslegal.com.

(*) 2405-2480MHz; <14dBm



Safety information

Use in accordance with the regulations. Indoor use only. Keep your device completely dry. Disconnect your device before cleaning it with a dry cloth. This accessory must be fitted by a competent person, and installation must comply with the guidance, standards and regulations applicable to the city, country or state where the product is installed. Failure to comply with the relevant standards could lead to prosecution.

Box content

1



TS600 thermostat

2



Mounting plate

3



2 x AA batteries

4



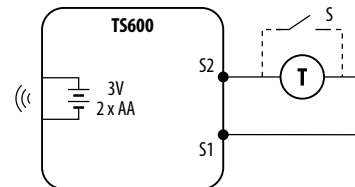
Short instruction

5



Mounting screws

Connection description



Mounting and installation of the thermostat

Mounting: to mount thermostat you can use accessories included with the set (mounting screws). Remove back cover to mount the plate to the wall. Now please insert the batteries inside the thermostat. After this just attach thermostat to the plate right into designed holes in the plate.

1



An external sensor can be connected to the S1 and S2 terminals. Purchased separately.

2



Mount the back case on the wall.

3



Insert the batteries. TS600 will automatically go into pairing mode.

4



Add the front case.

Button operation



Touch sensor area

DEVICE STATUS

Press the touch button to see the **status** of the device. If TS600 is calling for HEAT, the LED will be **GREEN**. If TS600 is SATISFIED, the LED will be **RED**.

IDENTIFY MODE

If TS600 is paired, press and hold the touch button for 3 seconds. TS600 will enter **Identify** mode and will send Identify command to all related devices. To stop Identify mode press button one time.

BUTTON LOCK

TS600 can be locked or unlocked via the app. To unlock the device manually, you need to power cycle device and then press and hold the touch button for 10 seconds during the first minute after reboot. The device will reset again and unlock.

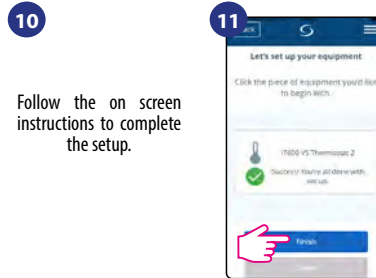
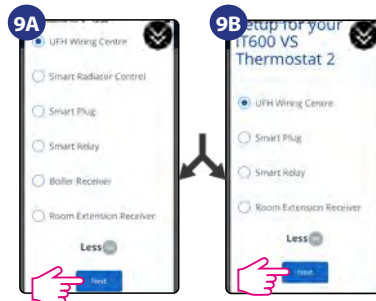
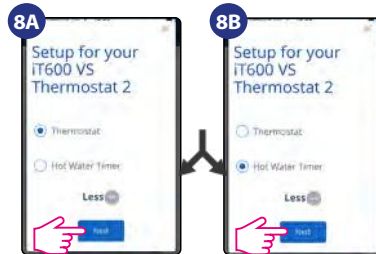
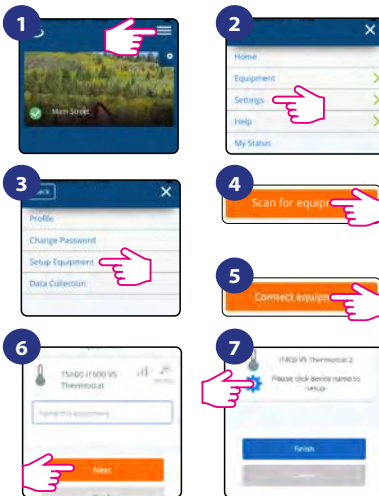
FACTORY RESET / PAIRING MODE

To perform a **reset**, press and hold the touch button for 10 seconds. The LED will turn **red** for 5 seconds. TS600 will leave the network and reset. Once completed, the TS600 will re-enter pairing mode.

LED indication

LED colour	LED diode	Meaning
GREEN	•	Information on the operating status of the thermostat STARTED HEATING (COOLING) - press the key once and check the status.
RED	•	Information on the operating status of the thermostat HEATING OFF (COOLING) - press the key once and check the status.
RED	•••••	Thermostat is in pairing mode.
ORANGE	•••••	Thermostat paired with coordinator.
GREEN	•••••	Active identify mode.
RED	•••••	Error (check in the app).
RED	•••••	Low battery.
RED	•••••	Connection lost.
RED	—	Restoring factory settings after holding down the key for 10 seconds.

Pairing process



Follow the on screen instructions to complete the setup.



Please note:

For more details please refer to the full TS600 manual instruction available at www.salus-controls.eu